

THAILAND

MAE SAI DISTRICT, CHIANG RAI PROVINCE

IMAGERY ANALYSIS: 13 TO 19 SEPTEMBER 2024 PUBLISHED 2 OCTOBER 2024 V1

ANALYSED AREA (MAE SAI DISTRICT) ~300km ²	POPULATION IN ANALYSED AREA 82,000	TOTAL BUILDING IN ANALYSED AREA 87,000	TOTAL CROPLAND IN ANALYSED AREA 170km ²
--	--	--	--

FLOOD EXTENT 70km ² (23%)	POPULATION POTENTIALLY EXPOSED TO FLOODS 13,600 (17%)	AFFECTED BUILDING IN ANALYSED AREA 13,000 (15%)	AFFECTED CROPLAND IN ANALYSED AREA 54km ² (32%)
--	---	---	--

AFFECTED POPULATION BY GENDERS MALE 6,650 (17%) FEMALE 6,950 (17%)	AFFECTED VULNERABLE POPULATION CHILDREN (<5) 600 (16%) ELDERLY (>60) 2,700 (17%)
---	---

FLOOD FL20240912THA



Satellite detected water extents from 13 to 19 September 2024 over Mae Sai District, Chiang Rai Province

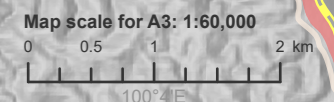
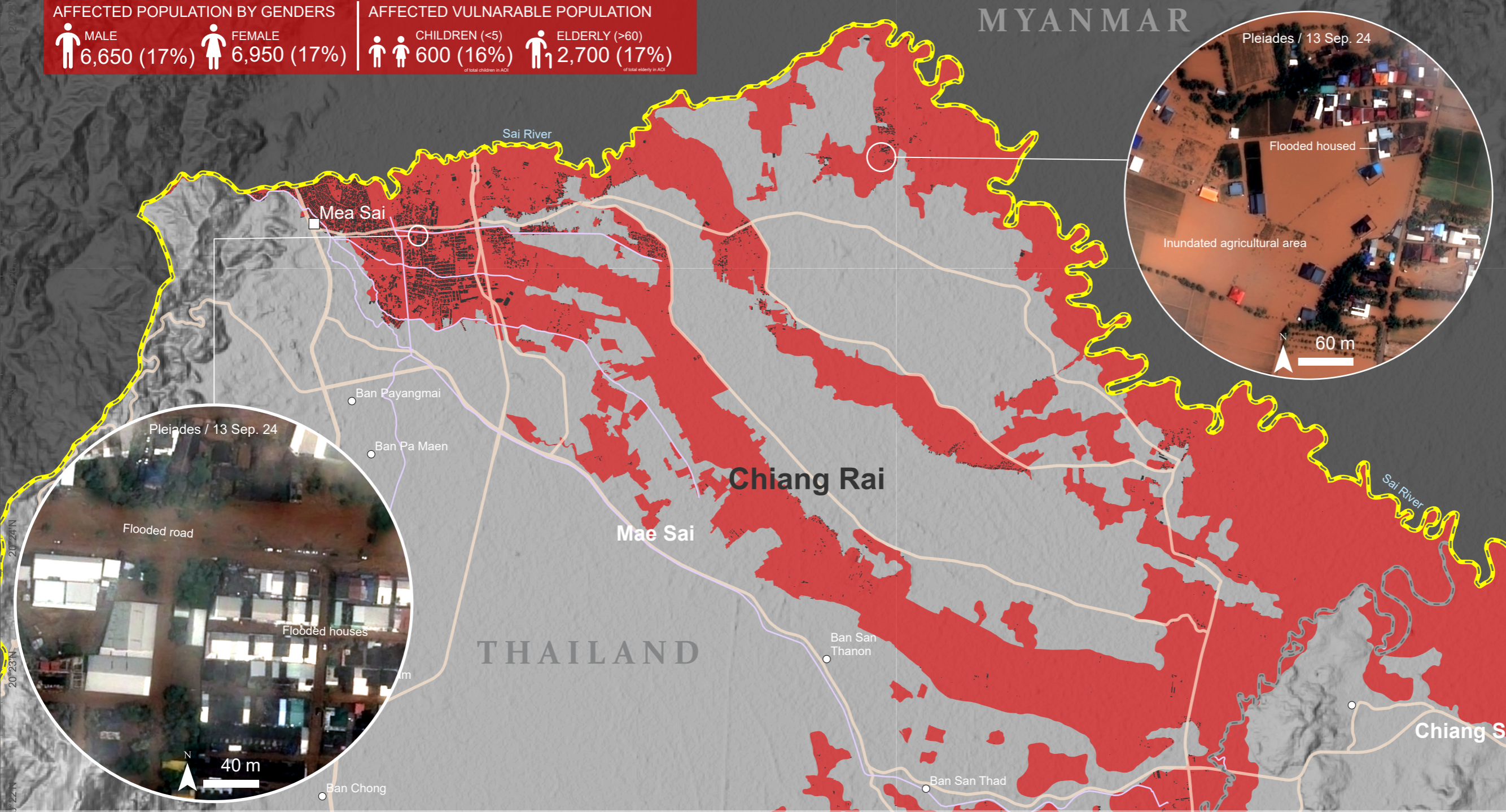
This map illustrates cumulative satellite-detected water using multiple satellites in Mae Sai District, Chiang Rai Province, Thailand from 13 to 19 September 2024. Within the analysed area of about 300 km², a total of about 70 km² of land appears to be affected by flood waters.

Based on Worldpop spatial demographic data, about 13,600 people are exposed or living close to flooded areas from 13 to 19 September 2024.

This is a preliminary analysis and has not yet been validated in the field. Please send ground feedback to the United Nations Satellite Centre (UNOSAT).

Legend

- City / Town
- Village
- International boundary
- District boundary
- Canal
- Road
- Affected building
- Accumulated flood extent [13 to 19 Sep. 2024]



Spatial Reference: WGS 1984 UTM Zone 47N
 Satellite: Pleiades (13, 15, 17, 18 and 19 September 2024)
 Satellite: Sentinel-1 and Sentinel-2 (15 September 2024)
 Satellite: RCM-3 (14 and 15 September 2024)
 Satellite: GeoEye-1 (15 September 2024)
 Satellite: TerraSAR-X (15 September 2024)
 Satellite: Landsat-8 (16 September 2024)
 Administrative boundaries: Royal Thai Survey Department, contributed to HDX by OCHA ROAP
 Reference water: EC JRC/Google and ESA Worldcover 2020
 Populated place: OpenStreetMap
 Road data: OpenStreetMap
 Population data: Worldpop constrained (2020)
 Building footprint: Google Open Building Analysis: United Nations Satellite Centre (UNOSAT)
 Production: United Nations Satellite Centre (UNOSAT)
 The boundaries and names shown, and the designations used on this map do not imply official endorsement or acceptance by the United Nations. The United Nations Satellite Centre - UNOSAT is not responsible for the misuse or misrepresentation of the map.